

**From:** Kurt Bluemel Inc. [news@kurtbluemel.com]  
**Sent:** Friday, June 18, 2010 9:07 AM  
**Subject:** Hot Plant List - Weekly Availability



## Kurt Bluemel Inc. Newsletter

### This Issue's Articles

- :: HOT PLANTS
- :: Shipping is Easy!
- :: A Word with Our President
- :: Market Trends

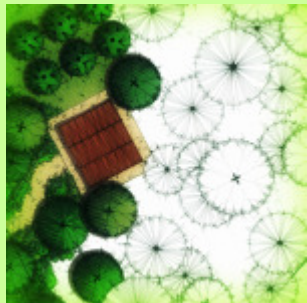
Dear John,

Thank you for your interest in our plant material. For over 45 years we have been the Mid-Atlantic's leading purveyor of fine ornamental grasses, hardy perennials, and bamboo. We look forward to providing you with the best plants for your specific design and growing environment. Our team takes the opportunity and responsibility to offer you healthy, useful and diverse plant material for the American landscape very seriously. Embracing both the art & science of horticulture is our passion.

*Kurt Bluemel*

& The Team at Kurt Bluemel, Inc.

### HOT PLANTS FOR LANDSCAPING



**Ready for Immediate Shipping**

Coreopsis all varieties

### Bamboo

#### The Sky is the Limit

Over this past months, we have had a great deal of both new and renewed interest in our collection of Bamboos. We currently carry over 40 different varieties of bamboos in various cane sizes, colors and environmental tolerances.



Fargesia is the best choice for clumping and screening. Works beautifully in-ground or in a patio container. Phyllostachys is excellent for screening out

Sedum 'Matrona' & others  
 Monarda  
 Solidago r. 'Fireworks'  
 Eupatorium m. 'Gateway'  
 Smilacina racemosa  
 Iris siberica  
 Bergenia cordifolia  
 Carex e. 'Aurea'  
 Salvia n. 'Bleuheugel'  
 Hakonechloa all var.  
 Stokesia laevis  
 Carex pensylvanica  
 Brunnera macrophylla  
 Chasmanthium lat.  
 Caryopteris 'Blue Mist' & 'Azure'  
 Bouteloua  
 Achillea all varieties  
 Festuca all var.  
 Astilbe arendsii x 'Fanal'  
 Andropogon gerardii  
 Gallium odoratum  
 Polygonatum  
 Calamagrostis a. 'Karl Foerster'  
 Cortaderia 'Andes Silver'  
 Carex morrowii all  
 Rudbeckia fulgida x fulgida

**Many - Many - Many More**

**Call for real-time  
 availability & Pricing  
 or click this**

**link**

**Don't forget with have LINERS too!**



noise, unattractive views (ie neighbors homes and office buildings), and wind. It grows upwards of 38'. Pleioblastus is wonderfully diverse in size and habit, but absolutely reliable. There are species 12" tall and are great for ground-cover or naturalizing an area with a lush bamboo carpet. Lesser known is the Sasa with broader palm-like leaves that make a rich perennial border.



From 1' to 40', variegated to lush green, fine foliage or palm-like, the sky is the limit with bamboo.

**Message from Kurt Bluemel**

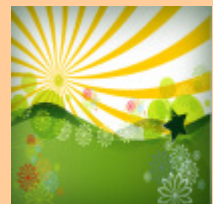


This week Mr. Bluemel is at our Eastern Shore Campus planting out ornamental grass crops to ensure the longevity of our collections. Our field grown ornamental grasses are tried, true and tested for hardiness and beauty.





Look here next week for a personal note.

**Freshen Up Your Client's Existing Landscape**

Promote new foliage and re-bloom by trimming back exhausted foliage and spent blooms. Be sure to save some old blooms on the plant to generate seeds. One of the best parts of growing and planting perennials as their natural proliferation. Click this link to read an inspiring article about this subject and more!



**Weekly Availability**

Location	Excel Format	PDF Format
Maryland		
Florida		

**\$\$\$Save \$\$**  
**Volume**  
**Purchasing**

Purchasing plant material in volume can save you and your client big money. When planning your job lists, order in groups of 500 or more to get % off your order. It saves on both plant material and shipping in most cases. When placing your order let us know how we can help you save on cost!

Call 410-557-7229 ext. 6  
for more information.

Kurt Bluemel Inc. | 2740 Greene Lane | Baldwin | MD | 21013